

Maxdesign is a brand of FK Europe Srl

Headquarters
via Monte Santo 28
31039 Riese Pio X (TV), Italy
T +39 0423 432216
E info@maxdesign.it
maxdesign.it

Betty

design Christoph Jenni, 2013



maxdesign

Betty

Design Christoph Jenni, 2013

Dati tecnici

Scocca

Struttura interna in acciaio, schiumata con poliuretano espanso.

Rivestimenti

Rivestimento fisso in tessuto, eco-pelle e pelle, come da cartelle colori. Disponibili anche versioni in tessuto-cliente e pelle-cliente.

Struttura

Gambe di legno di frassino naturale o verniciato.

Finiture

Vedi sezione "Color plan".

Consumo tessuto e pelle

- Tessuto (uni, senza rapporto, h. 1,40 ml):
Betty B010: completamente rivestita 3,60 ml
Betty B020: completamente rivestita 2,60 ml
Betty B030: completamente rivestita 0,95 ml
- Pelle:
Betty B010: completamente rivestita 7 m²
Betty B020: completamente rivestita 5,5 m²
Betty B030: completamente rivestita 1,5 m²

Technical details

Shell

Internal steel structure with polyurethane foam padding.

Frame

Ash-wooden legs natural or stained.

Finishes

See Section "Color plan".

Upholstery

Fixed upholstery in fabric, eco-pelle or leather, as per colour folders. Also available in customer's own fabric versions and customer's own leather versions.

Fabric and Leather requirements

- Fabric (uni, without pattern repeat, h. 1,40 ml):
Betty B010: fully upholstered 3,60 ml
Betty B020: fully upholstered 2,60 ml
Betty B030: fully upholstered 0,95 ml
- Leather:
Betty B010: fully upholstered 7 m²
Betty B020: fully upholstered 5,5 m²
Betty B030: fully upholstered 1,5 m²

Betty

Design Christoph Jenni, 2013

Betty Overview



Ⓢ B010
Poltrona con poggiatesta
/ Armchair with head-rest



Ⓢ B020
Poltrona
/ Armchair



Ⓢ B030
Ottoman
/ Ottoman

Legenda / Key: Ⓢ Rivestita / Upholstered

Betinha

design Christoph Jenni, 2016



Dati tecnici

Scocca

Struttura interna in acciaio, schiumata con poliuretano espanso.

Rivestimenti

Rivestimento fisso in tessuto, eco-pelle e pelle, come da cartelle colori. Disponibili anche versioni in tessuto-cliente e pelle-cliente.

Struttura

Gambe di legno di rovere naturale o verniciato.

Consumo tessuto e pelle

- Tessuto (uni, senza rapporto, h. 1,40 ml): completamente rivestita 1,50 ml
- Pelle: completamente rivestita 2,60 m²

Finiture

Vedi sezione "Color plan".

Technical details

Shell

Internal steel structure with polyurethane foam padding.

Upholstery

Fixed upholstery in fabric, eco-pelle or leather, as per colour folders. Also available in customer's own fabric versions and customer's own leather versions.

Frame

Oak-wooden legs natural or stained.

Fabric and Leather requirements

- Fabric (uni, without pattern repeat, h. 1,40 ml): fully upholstered 1,50 ml
- Leather: fully upholstered 2,60 m²

Finishes

See Section "Color plan".

Betinha Overview



Ⓢ B040
Poltroncina
/ Small armchair

Legenda / Key: Ⓢ Rivestita / Upholstered

Betty, Betinha

Color plan

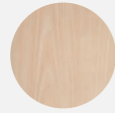
Scocca / Shell

Rivestita / Upholstered:
Tessuto / Fabric
Pelle / Leather
Eco-Pelle / Eco-leather

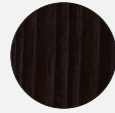
Vedi Maxdesign Toolbox /
See Maxdesign Toolbox

Betty – Struttura / Frame

Legno /
Wood



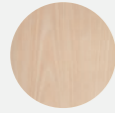
Natural Ash



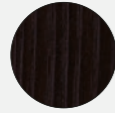
Dark Ash

Betinha – Struttura / Frame

Legno /
Wood



Natural Oak



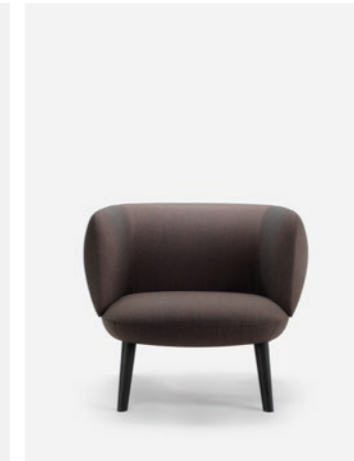
Dark Oak

Betty, Betinha

Finiture / Finishes



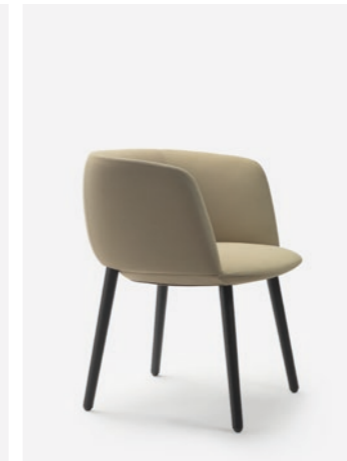
Cod. B010 / B030
Upholstered
Wood Dark Ash



Cod. B020
Upholstered
Wood Dark Ash



Cod. B040
Upholstered
Wood Natural Oak



Cod. B040
Upholstered
Wood Dark Oak



Cod. B040
Upholstered
Wood Dark Oak